

Fargo-Moorhead Metropolitan Flood Risk Management Project

Diversion Authority

November 8, 2012



US Army Corps of Engineers
BUILDING STRONG®



Presentation Outline

- ✓ Monthly Update
- ✓ West Alignment
- ✓ Oxbow Area Ring Levee Update
- ✓ Other levee projects
- ✓ NEPA Path Forward



Fargo-Moorhead - 2009



Monthly Update

- ✓ All Corps-led design efforts are under budget.
 - ✓ **Beginning NEPA process to address project modifications**
 - ✓ **Drayton Dam Mitigation: Public Meeting being held 15 November**
 - ✓ **Wild Rice Mitigation: PER Review completed by the ATR/Sponsors**
 - ✓ **Manitoba Diversion site visit held 10-12 October**
 - ✓ **Agency Meeting held November 8th**

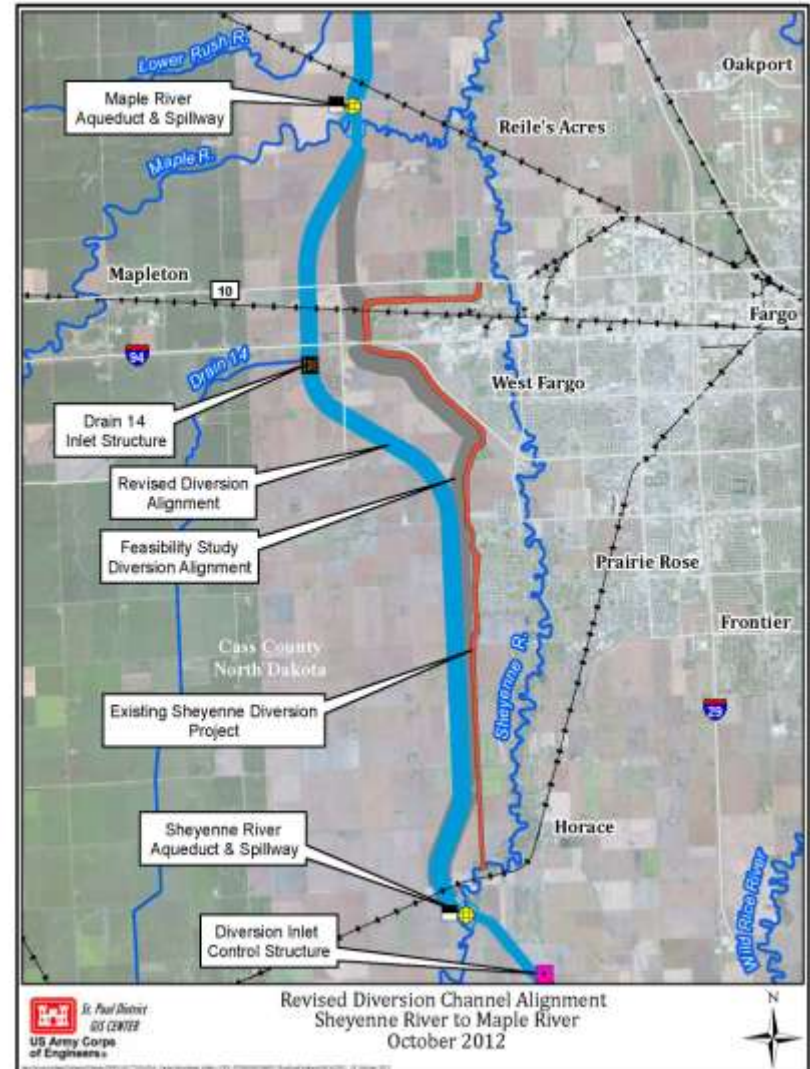
Monthly Update

- ✓ Manitoba Diversion Trip



West Alignment

- ✓ From the Sheyenne River to the Maple River
- ✓ Shifted west of Raymond Interchange on I-94
 - ✓ Drain 14 will be re-routed
- ✓ Is offset from the existing Sheyenne Diversion Project
- ✓ Resolves technical issues while being the most consistent with the Feasibility Study alignment



Ring Levee – Oxbow Area

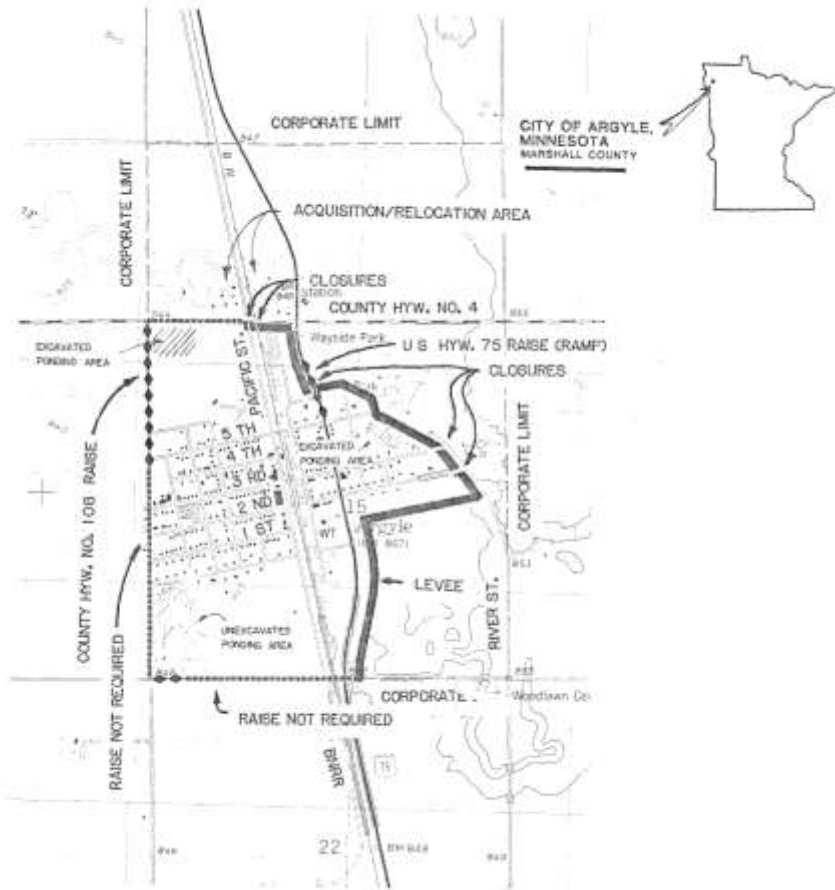
- ✓ Corps-led effort
- ✓ Team assembled
 - ✓ Corps
 - ✓ City of Oxbow
 - ✓ Pleasant Township
 - ✓ Cass County
 - ✓ Sponsors
- ✓ Kick-Off meeting held
November 6th
- ✓ Beginning process of
addressing Oxbow's list
of conditions





Corps Ring Levee Projects

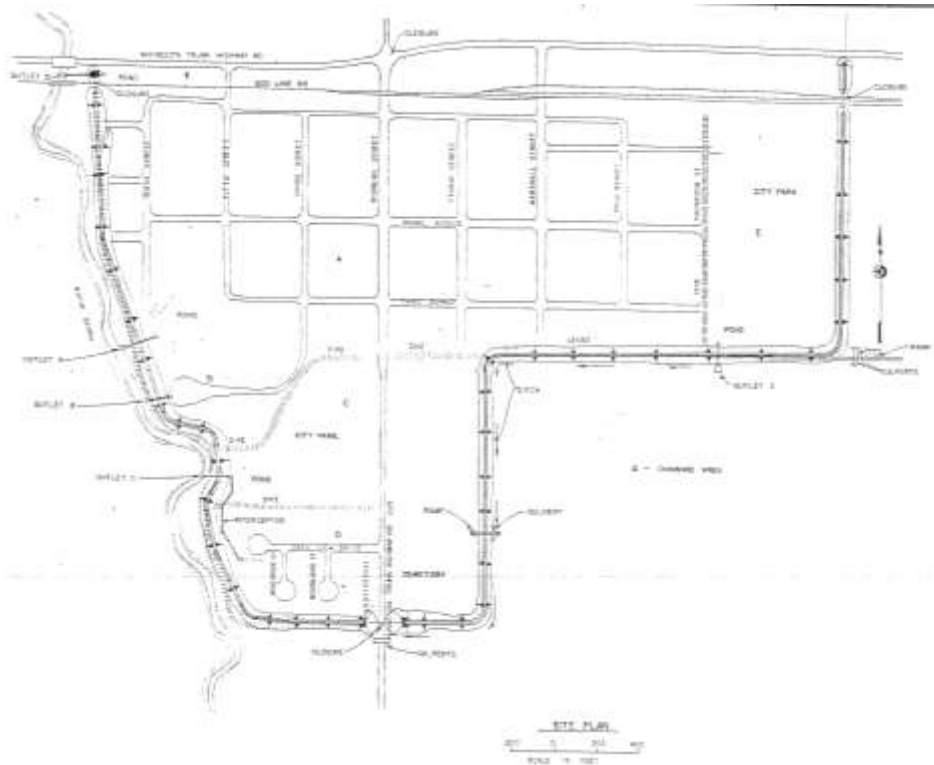
- ✓ Federally Authorized and Locally Operated in Red River Basin
 - ✓ Emerson-Noyes, Canada and Minnesota
 - ✓ Pembina, North Dakota
 - ✓ Argyle, Minnesota
 - ✓ Oslo, Minnesota
 - ✓ Alvarado, Minnesota
 - ✓ Halstad, Minnesota
 - ✓ Argusville, North Dakota



- ✓ **Argyle, MN**
- ✓ 1.7 mi. levee
- ✓ Heights 7-12 ft.
- ✓ Levees, road raises, relocation of 12 homes
- ✓ Constructed in mid 1980s
- ✓ Damages prevented through 2011 ~ \$1.2 million



- ✓ **Oslo, Minnesota**
- ✓ 3.2 mile-long levee
- ✓ Height of 10 ft.
- ✓ Constructed in mid 1970s
- ✓ Damages prevented through 2011 ~ \$72 million



- ✓ **Alvarado, MN**
- ✓ Along Snake River in Marshall County, east of Oslo, MN
- ✓ Constructed in late 1980s
- ✓ 2 mi. long levee
- ✓ 5 ft. avg. height
- ✓ Damages prevented through 2011 ~ \$1.7 million



Levee Systems

Community	Date Completed	Levee Length (mi)	Levee Height (ft)	Ring Levee	Cost	Damages Prevented
Pembina, ND	1970's	3	8-20	x	\$1,160,000	\$87,850,000
Oslo, MN	1976	3.2	10	x	\$2,000,000	\$72,420,000
Argyle, MN	1980's	1.7	2-7	x	\$1,425,000	\$1,210,000
Halstad, MN	1986	2.4	5-12	x	\$1,615,000	\$9,440,000
Alvarado, MN	1987	2	5	x	\$685,000	\$1,715,000
Argusville, ND	1990	1.9	8	X	\$1,600,000	Not Available
Emerson-Noyes	1991	1.1	7-12	X	\$543,000	Not Available
Grand Forks, ND/East Grand Forks, MN	2007	30	5-20	X	\$394,000,000	\$1,000,000,000
Wahpeton, ND/Breckenridge, MN	2012	4 and 8	10		\$21,098,000/\$44,974,000	\$133,000,000

Levee Safety Program

- ✓ Created in 2006 to assess integrity and viability of levees
 - ✓ **Informed assessments**
 - ✓ **Justify levee safety decisions**
 - ✓ **Make recommendations for improvements**
- ✓ Over 14,000 miles of levees included in program
- ✓ Many communities have their own levee systems but are part of the Corps Levee Safety Program





NEPA - Path Forward

- ✓ Supplemental Environmental Assessment (EA)
- ✓ November 2012: Corps begins National Environmental Policy Act (NEPA) process
- ✓ February 2012: Decision on whether to include Oxbow Area ring levee in pending EA
- ✓ May 2013: Public Meeting and comment period
- ✓ July 2013: NEPA process complete and decision is finalized